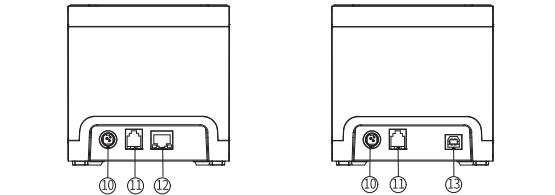
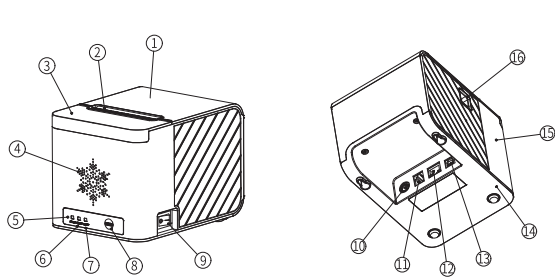


- ◆ 请不要触摸打印头及其连接部件，以免烫伤或因静电损坏打印头。
- ◆ 如果打印机出现冒烟、有异味或不正常的噪音时，请您立即关闭电源，继续使用可能会引起火灾。请立即拔掉插头并与销售商取得联系询问处理方法。
- ◆ 请勿自行拆卸本机。不正当的维修是危险的，并将因此失去供应商为您提供的保修承诺。
- ◆ 请使用供应商提供的或符合规格的电源适配器。不恰当的电源适配器可能损坏机器并引起火灾。
- ◆ 请防止异物进入机内，以免损坏机器元件，严重的甚至可能导致火灾或事故。
- ◆ 如有水或其他液体流入机内，请立即拔掉电源线，并马上与销售商取得联系询问处理方法。继续使用可能引起火灾。

- ◆ Do not touch the printer head and its related components in case you may get burnt during the process or the printer may damaged by static electricity.
- ◆ Shut down your equipment immediately if it produces smoke, a strange odor or unusual noise. Continued usage may lead to fire. Immediately unplug the equipment and contact your dealer for advice.
- ◆ Never attempt to repair this product by yourself, improper repair work can be dangerous, and maye invalidates your guarantee of this equipment at the same time.
- ◆ Be sure to use the specified power source, connection to an improper power source may destroy your equipment and lead to fire.
- ◆ Do not allow other thing to fall into the equipment. Penetration by other thing may lead to fire or accident.
- ◆ If water or other liquid spills into this equipment, unplug the power cord immediately, and then contact your dealer to acquire method. Continued usage may lead to fire.

注意事项 Attention Matters

- ◆ 请参照本手册提到的连接方式连接电缆，不正确的连接方式可能会使机器损坏或燃烧。
- ◆ 打印机应放置在一个平整，稳定的地方，掉落或其它碰撞可能使机器破裂和损坏。
- ◆ 请勿在潮湿或多灰尘的地方使用本机，过度的潮湿和过度的灰尘可能损坏机器。
- ◆ 打印机应避免阳光、强光和热源的直射，否则会影响打印效果，使热敏纸失效等。
- ◆ 如果长期不使用本机，应拔掉电源插座。
- ◆ 打印机不适合在震动环境下工作，如无法避免，请务必增加减震设计。
- ◆ 打印机如果在粉尘、油污、潮湿、高低温（详见产品参数表）等恶劣环境下工作，必须做有效的防护措施，以免影响打印机正常使用。
- ◆ Do not connect cables in other ways than those what mentioned in this manual. Improper connect ions may cause equipment damage and burning.
- ◆ Be sure to set equipment on a firm, stable, horizontal surface. The product may break or cause injury if it falls.
- ◆ Do not use in locations of high humidity or dust levels. Excessive humidity and dust may cause equipment damage.
- ◆ Avoid leaving the printer under direct sunlight, bright light or heaters, which may have influence on the printing effect, deactivate the thermal paper.
- ◆ To ensure safety, unplug this product before leaving it unused for an extended period.
- ◆ Printer is not applicable to work in a vibrating environment. If this situation can't avoided, please add aseismic design.
- ◆ In order to avoid the influence on normal use, effective protective measures must be taken if printer works in severe dust, oil pollution, humid or high temperature environment. Details can refer to product specification.



1	纸仓盖 Roll Paper Cover
2	出纸口 Paper Outlet
3	切刀盖 Cutter Cover
4	喇叭孔 Horn Hole
5	缺纸指示灯 Paper-out indicator ligh
6	错误指示灯 Error indicator light
7	电源指示灯 Power indicator light
8	走纸按键 Feed Button
9	电源开关 Power Switch
10	电源接口 Power Interface
11	钱箱接口 Cash Drawer Port RJ11 Socket
12	网络接口 LAN Interface
13	USB接口 USB Interface
14	底壳 Base Case
15	大身 Printer Case
16	开门按键 Cover Open Button

- ◆ 进纸  
开机状态下，放入普通热敏纸，按下【FEED】键，打印机开始走纸，松开【FEED】键则停止走纸。
- ◆ 自检  
按住走纸键，打开电源开关，缺纸指示灯和错误指示灯交替闪烁后，松开走纸键，打印机将打印出自检。
- ◆ Feed Paper  
Power on state, put the normal thermal paper, press the 【FEED】 button, the printer starts to feeding , release the 【FEED】 button to stop the paper feeding.
- ◆ Self-test  
Press and hold the feed button, turn on the power, after the paper out indicator and error indicator flash alternately, release the feed button, the printer will print out the self-test paper.

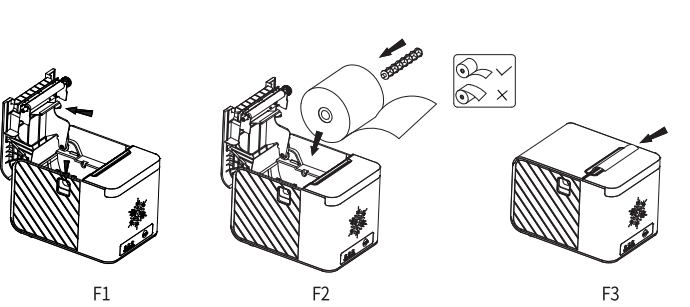
连接 Connection

将电源插头插入电源接口，根据机型选择相应接口线插入对应的接口，接口参数选择请按自检样条上设置。

Insert the power plug into the power interface, and insert the corresponding interface cable into the corresponding interface according to the model. Please set the interface parameter selection according to the self-test paper.

装纸步骤 Paper Loading Steps

- 按下开门按键(如图F1)，纸仓盖被弹起打开。
  - 将纸轴插入纸卷纸芯，并拉出部分纸头，一起放入纸仓内。注意装纸方向。(如图F2)
  - 关闭纸仓盖，撕去多余纸头。(如图F3)。
- Press the cover open button (as shown in Figure F1), and the roll paper cover will be popped open.
  - Insert the paper reel into the core of the paper roll, pull out some of the paper heads, and put them into the paper bin together. Pay attention to the loading direction. (as shown in Figure F2)
  - Close the roll paper cover and tear off the excess paper.(as shown in Figure F3)



控制面板 Operating Panel

(如图F4)  
As shown in Figure F4

1	缺纸指示灯 Paper-out indicator light	缺纸时此灯点亮 This light will be on when out of paper
2	错误指示灯 Error indicator light	指示各种错误，见附表T1 Indicates errors, refer to table T1
3	电源指示灯 Power indicator light	上电，绿色电源指示灯常亮 Power on, the green power indicator light is always on
4	走纸按键 Feed button	进纸或打印自检页 Feed or print self-test paper

附表T1(Table1)

含义 Meaning	指示灯状态 Indicator lights status	说明 Description
纸仓盖打开 Roll paper cover open	蜂鸣器响同时错误指示灯常亮 The buzzer beeps and the error indicator is on	关闭纸仓盖 Close the roll paper cover
缺纸 out of paper	蜂鸣器响同时缺纸指示灯常亮 The buzzer beeps and the paper-out indicator is on	装入纸卷后关闭纸仓盖 Load the paper and close the paper cover
打印机头过热 Printer overheat	蜂鸣器响同时错误灯闪烁 The buzzer beeps and error indicator light flashes.	等待打印机头温度降低自动恢复 Restore automatically when printer head temperature reduced.

序号 NO	装箱物品名称及规格 Names and Specifications of Goods		数量 Quantity	描述 Description
1	打印机	Printer	1	
2	电源	Power	1	
3	接口线	Interface Cable	1	
4	试机纸	Testing Paper	1	
5	用户手册	User's manual	1	
6	驱动光盘	CD Driver	1	
			选配Optional	

注：订单有特殊要求时可能与此表不同  
Note:It may be different with this chart when there is special request for the order.

产品合格证 Product Qualification Certificate

产品合格证  
Product Qualification Certificate

技术标准/Standard: Q/HDSPR0005-2016

生产检验/Production Inspection:

产级检验/Factory Inspection:

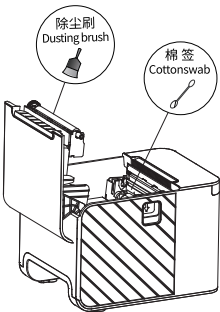
清洁保养 Cleaning And Maintenance

打印机需要定期保养,方法如下:

- 用棉签蘸取适量酒精,擦拭打印头,清除积碳、灰尘等杂质;用除尘刷清理打印机胶辊上的纸屑和灰尘。
- 以上操作须在打印机断电状态下进行。

The printer needs to receive regular maintenance, the methods are as follows:

- Wipe the printing head with a cotton swab moistened with alcohol, to remove carbon deposit, dust and so on. Clear the paper scraps and dust of printing roller with dusting brush.
- Above operations should be taken with printer switching off.



打印方式 Printing Method	行式热敏打印 Thermal Line
点密度 Resolution	8点/mm, 576点/行; 8dots/mm, 576dots/line
打印纸宽 Paper Width	79.5±0.5mm
打印速度 Printing Speed	160 mm/s (最大速度); 160 mm/s (Max)
打印字符 Character Set	(ANK字符集): 12×24点, 1.5×(宽)×3(高)毫米 ANK: 12X24 dots, 1.5(W)X3(H)mm (国标汉字): 24×24点, 3×(宽) x3 (高) 毫米 GB18030: 24X24dots, 3(W)X3(H)mm
纸张类型 Paper Type	80mm×φ80mm(MAX)
纸张厚度 Paper Thickness	普通纸: 0.06mm~0.08mm Normal Thermal Paper: 0.06mm~0.08mm
接口 Interface	U口、网口、蓝牙 USB、LAN、Bluetooth
支持功能 Function	缺纸报警、开盖报警、打印头过热保护 选配: 语音播报 Paper-out alarm, Upper case open alarm, Printer head over-heat protection. Optional: Voice Broadcast
钱箱控制 Cash Drawer Control	DC24V, 1A, 6线RJ-11插座 DC24V, 1A, 6pin RJ-11 socket
电源要求 Power Supply	DC24V±10%, 2A, A-1009-3P插座 DC24V±10%, 2A, A-1009-3P power socket
寿命 Working Life	打印头寿命: 150km Thermal Printer Head: 150km 切刀寿命: 1,500,000次 Cutter: 1,500,000
工作环境温度/湿度 Working Environment Temperature/Humidity	0~50℃ (工作环境/Working Environment Temperature) /10~80% (相对湿度/Relative Humidity)
储存环境温度/湿度 Storage Temperature/ Humidity	-20~60℃ (工作环境/Working Environment Temperature) /10~90% (相对湿度/Relative Humidity)

一、保修条例:

- 在使用本机前,请详细参阅产品使用说明书,并按有关规定操作。
- 打印机保修期自开具购货发票之日起算,在正常使用情况下,凭购买发票及本保修单,实行免费一年保修服务(打印头除外)。
- 如属下列情况即使在保修期内,不享受保修服务,但属于收费修理:  
A.不能出示本保修单或保修单涂改; B.过电流、过电压等使用不当造成损坏的;  
C.对产品自行改造造成损坏的; D.用户保管、运输或者不可抗拒的自然因素造成损坏的。

二、使用注意:

- 购买时,请注意本保修单的保存,并及时由经销商填写本保修单上的产品名称、序列号、购买日期,要与购买发票保持一致。
  - 使用前,请首先仔细阅读产品使用说明书,并按照说明书进行正确的操作。
  - 使用质量优良的打印纸,否则影响打印质量与机头使用寿命。
  - 请注意经常清理打印纸出口和纸仓,避免纸屑堵塞。
  - 如果使用环境较恶劣,如油烟、灰尘较多的地方,则要注意保持产品清洁。打印机发生故障,请不要自行拆卸,并及时与经销商联系。
- Warranty Regulations:**
- Before using this machine, please refer to the product instructions and operate according to relevant regulations.
  - The printer warranty period starts from the date of invoice issuing. Normally we will offer free one-year warranty service with this Warranty Card and invoice (except for the print head).
  - For the case like below, even during the warranty period, should afford repair cost .  
A. Failure to offer this Warranty Card or there is any alteration.  
B. Damage caused by improper use ,like overcurrent, overvoltage, etc.  
C. Damage caused by self-improvement of products.  
D. Damage caused by user keeping, transportation or irresistible natural factors.

Attention in use:

- When purchase, please pay attention to the reservation of this warranty card, and fill in the product name, serial number and purchase date by the distributor in time. It should be consistent with the purchase invoice.
- Before using, please read the product instructions carefully and follow the instructions correctly.
- Use qualified paper roll , otherwise it will affect the printing quality and mechanism life span.
- Please pay attention to cleaning paper scraps regularly in the housing , just in case of paper block by scraps.
- If the use environment is harsh, such as soot and dust, pls keep the production clean. Once anything goes wrong , please do not disassemble it by yourself and contact the dealer in time.

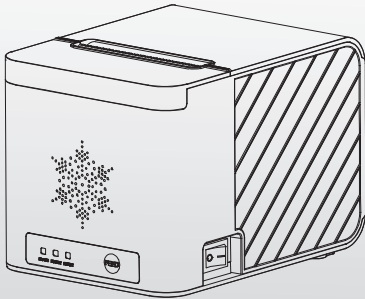
产品保修卡  
WARRANTY CARD

产品名称/Product Name \_\_\_\_\_ 经销商/Dealer \_\_\_\_\_

序列号/Seria Number \_\_\_\_\_ 购买日期/Purchase Date \_\_\_\_\_

维修时间 Maintenance Time	维 修 记 录 Maintenance Records	维修人员 Repair Personnel

用户手册  
User's Manual  
(Ver.1.00)



POS8811 热敏票据打印机  
Thermal receipt printer